

Company Name Date/Time Field

Address Surveyed By

City State Zip Code Phone Number

Contact FAX Number

email

Machine Classification Information

Property # Manufacturer Model (provide if known)

Press Serial Number Frame Type Year of Manufacture

Rated Tonnage Press Stroke Length (inches) Shut Height Press Drive System

Link Systems 1100 Tonnage Monitor

Type Tonnage Monitor Requested

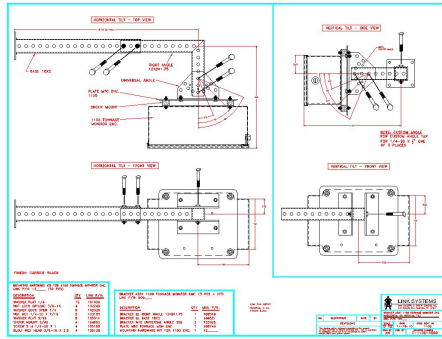
Configuration

Specify Strain Gage Lengths and quantity

35' 50' 75' 100' Strain Gage Enclosures will be quoted unless otherwise noted.

Type of Strain Gage Mounting Required

Graphic Tonnage Analyzer Software Mounting Bracket assembly required



Installation and Calibration

This section is to request Installation and or calibration of the Link 1100 Tonnage Monitor. A separate labor quote will be generated for this request.

- Installation & Calibration Calibration Only

Press Type and Size (single, two and four point refer to the number of points connecting the ram to the crown)

- | | |
|--|--|
| <input type="radio"/> Single point up to 100 tons 2 Channel | <input type="radio"/> Single point 110 to 250 tons 2 Channel |
| <input type="radio"/> Single point 260 to 500 tons 2 Channel | <input type="radio"/> Two point up to 200 tons 2 Channel |
| <input type="radio"/> Two point up to 200 tons 4 Channel | <input type="radio"/> Two point 210 to 500 tons 2 Channel |
| <input type="radio"/> Two Point 210 to 500 tons 4 Channel | <input type="radio"/> Two point 510 to 1000 tons 4 Channel |
| <input type="radio"/> Four point up to 400 tons 4 Channel | <input type="radio"/> Four point 410 to 1000 tons 4 Channel |
| <input type="radio"/> Four point 1100 to 2000 tons 4 Channel | |