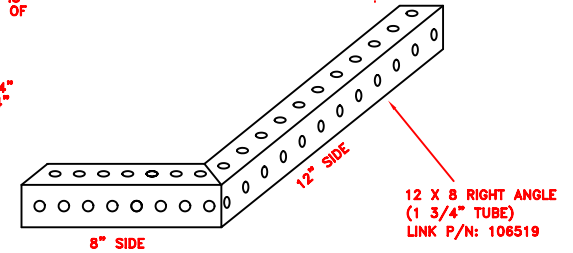


ADJUSTMENT WHEN BASE IS CONNECTED TO 12" SIDE OF 12XB RIGHT ANGLE:

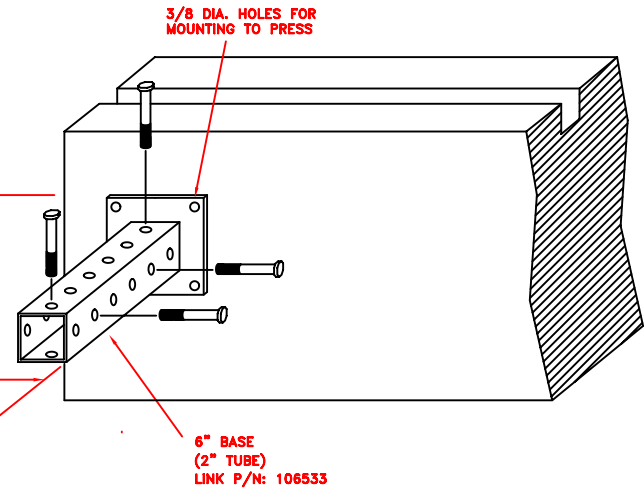
MAX. 'E' DIST. = 14"
 MIN. 'E' DIST = 12"
 MAX. 'F' DIST. = 13 3/4"
 MIN. 'F' DIST. = 11 3/4"



ADJUSTMENT WHEN BASE IS CONNECTED TO 8" SIDE OF 12XB RIGHT ANGLE:

MAX. 'E' DIST. = 10"
 MIN. 'E' DIST. = 8"
 MAX. 'F' DIST. = 17 3/4"
 MIN. 'F' DIST. = 11 3/4"

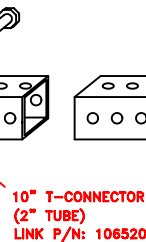
ADD TO 'E' DIST. THE DISTANCE FROM VERT. SUPPORT TO SENSING FIELD: 2.0"



2.0"

'E' DIST.

'F' DIST.



10" T-CONNECTOR
 (2" TUBE)
 LINK P/N: 106520

VERT. SUPPORT
 (1 3/4" TUBE)

VERT. LENGTH	LINK P/N
34"	106246
48"	106247
60"	106248

ANY EXCESS LENGTH MAY BE CUT OFF

1 ASSEMBLY (5 PCS) FOR EACH TRANSMITTER OR RECEIVER

ASSEMBLY P/N	BLACK MAX UNIT	VERT. SUPPORT
900394	18", 24"	34"
900395	30", 36"	48"
900396	42", 48"	60"

FINISH: CARBIDE BLACK

ALL NUTS, BOLTS, WASHERS, IN HARDWARE KIT
 LINK P/N: 106537 (58 PCS)

DESCRIPTION	QTY	LINK P/N:
BOLTS (HEX 3/8-16 X 2 1/2)	14	106135
WASHERS (3/8 FLAT)	28	103311
NUTS (NYLOCK 3/8-16)	14	102249
305 MTG BRACKET	2	105409

WARNING!!

The Link Lite Black Max must be installed so that the distance between its sensing field and the nearest point of operation hazard is greater than or equal to the minimum safety distance which must be calculated by a formula specified by OSHA and ANSI. See latest editions OSHA 1910.217, ANSI B11.1 and B11.9.



LINK SYSTEMS

LINK ELECTRIC & SAFETY CONTROL CO.
 444 McNally Dr. • Nashville, TN. 37211

LINK LITE BLACK MAX MOUNTING BRACKET ASSEMBLY, 90° BRACKET
 DRAWING P/N: 106614

NO	DESCRIPTION	DATE	BY
REVISIONS			
This drawing and/or technical information is the property of LINK ELECTRIC & SAFETY CONTROL CO. This is submitted in confidence and is not to be reproduced for others without LINK's prior written consent.			

SCALE	DATE	CODE IDENT NO
1=4	5-7-96	305

DWN BY	CHK BY	DRAWING NUMBER
JCN		C-305-1119

INCLUDED IN
HARDWARE KIT
(2 PER SIDE)

3/4 SHOCK MOUNTS (4 PLS)
(INCLUDED WITH LIGHT CURTAIN,
NOT INCLUDED IN HARDWARE KIT)

ADJ. 'C' DIST.

MAX. = 33 1/4"
MIN. = 20 1/4"*

ADJ. 'D' DIST.

MAX. = 40 1/2"
MIN. = 24 1/2"**

* NOTE:
MINIMUM 'C' DISTANCE CAN BE 4" IF BASE AND
ELBOW ARE CUT OFF. DO NOT CUT BASE
AND ELBOW TO LESS THAN 4" EACH.

** NOTE:
MINIMUM 'D' DISTANCE CAN BE 9" IF PIVOT IS CUT
TO 9" AND T-CONNECTOR IS CUT TO 4". DO NOT
CUT PIVOT OR T-CONNECTOR TO LESS THAN 9"
AND 4" RESPECTIVELY.

ADD TO 'D' DIST. THE
DISTANCE FROM VERT.
SUPPORT TO SENSING FIELD:
2.0"

2.0"

'D' DIST.

(PIVOT POINT)

3/8 DIA. HOLES FOR
MOUNTING TO PRESS

'C' DIST.

18" or 25" PIVOT
(1 3/4" TUBE)
LINK P/N: 106523

18" T-CONNECTOR
(2" TUBE)
LINK P/N: 106524

18" ELBOW
(1 3/4" TUBE)
LINK P/N: 106522

18" BASE
(2" TUBE)
LINK P/N: 106521

0° TO 180°

ANY EXCESS LENGTH
MAY BE CUT OFF

VERT. SUPPORT
(1 3/4" TUBE)

VERT. LENGTH	LINK P/N
34"	106246
48"	106247
60"	106248

1 ASSEMBLY (6 PCS) FOR EACH TRANSMITTER OR RECEIVER

ASSEMBLY P/N	BLACK MAX UNIT	VERT. SUPPORT
900383	18", 24"	34"
900384	30", 36"	48"
900385	42", 48"	60"

FINISH: CARBIDE BLACK

ALL NUTS, BOLTS, WASHERS, IN HARDWARE KIT
LINK P/N: 106536 (66 PCS)

DESCRIPTION	QTY	LINK P/N:
SHOULDER BOLTS (3/8-16 X 1/2 X 2 1/4)	2	101663
WASHERS (1/2 FLAT)	2	105191
BOLTS (HEX 3/8-16 X 2 1/2)	14	106135
WASHERS (3/8 FLAT)	30	103311
NUTS (NYLOCK 3/8-16)	16	102249
305 MTG BRACKET	2	105409

WARNING!!

The Link Lite Black Max must be installed so that the distance between its sensing field and the nearest point of operation hazard is greater than or equal to the minimum safety distance which must be calculated by a formula specified by OSHA and ANSI. See latest editions OSHA 1910.217, ANSI B11.1 and B11.19.



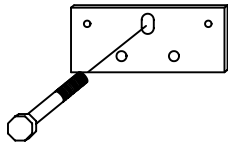
NO	DESCRIPTION	DATE	BY
1	REVISED PART: 106523	1-23-98	JCN

LINK LITE BLACK MAX MOUNTING
SWINGARM BRACKET
DRAWING P/N: 106615

SCALE	DATE	CODE IDENT NO
1=3	5-7-96	305
DWN BY JCN	CHK BY	DRAWING NUMBER C-305-1124

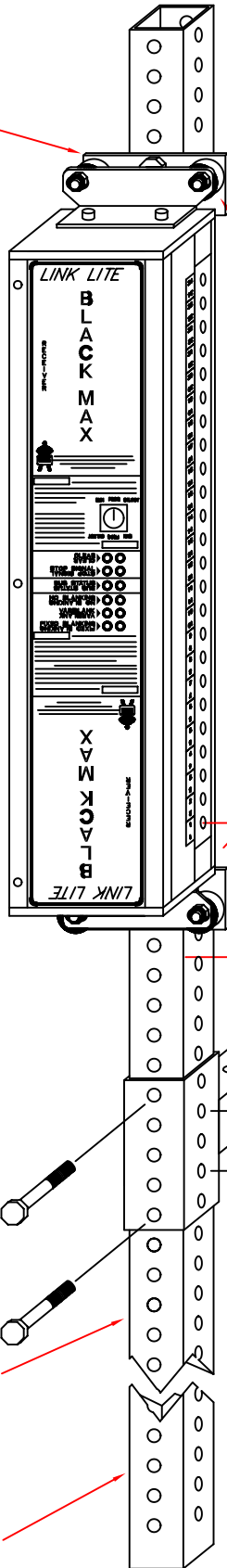
This drawing and/or technical information is the property of LINK ELECTRIC & SAFETY CONTROL CO. This is submitted in confidence and is not to be reproduced for others without LINK's prior written consent.

INCLUDED IN
HARDWARE KIT
(2 PER SIDE)



ALL NUTS, BOLTS, WASHERS, IN HARDWARE KIT
LINK P/N: 106535 (42 PCS)

DESCRIPTION	QTY	LINK P/N:
BOLTS (HEX 3/8-16 X 2 1/2)	10	106135
WASHERS (3/8 FLAT)	20	103311
NUTS (NYLOCK 3/8-16)	10	102249
305 MTG BRACKET	2	105409



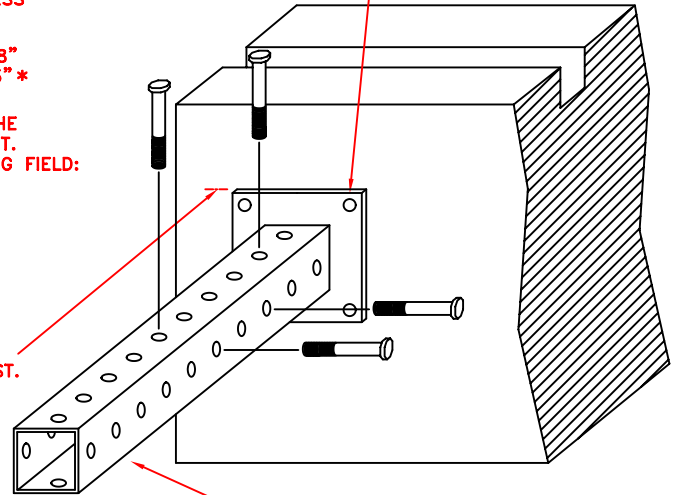
3/4 SHOCK MOUNTS (4 PLS)
(INCLUDED WITH LIGHT CURTAIN,
NOT INCLUDED IN HARDWARE KIT)

DISTANCE FROM PRESS
TO VERT. SUPPORT:

MAX. 'A' DIST. = 18"
MIN. 'A' DIST. = 13"*

ADD TO 'A' DIST. THE
DISTANCE FROM VERT.
SUPPORT TO SENSING FIELD:
2.0"

3/8 DIA. HOLES FOR
MOUNTING TO PRESS



10" BASE
(2" TUBE)
LINK P/N: 106534

10" T-CONNECTOR
(1 3/4" TUBE)
LINK P/N: 106518

VERT. SUPPORT
(1 3/4" TUBE)

VERT. LENGTH	LINK P/N
34"	106246
48"	106247
60"	106248

ANY EXCESS LENGTH
MAY BE CUT OFF

1 ASSEMBLY (4 PCS) FOR EACH TRANSMITTER OR RECEIVER

ASSEMBLY P/N	BLACK MAX UNIT	VERT. SUPPORT
900388	18", 24"	34"
900389	30", 36"	48"
900390	42", 48"	60"

FINISH: CARBIDE BLACK

* NOTE:
MINIMUM 'A' DISTANCE CAN BE 6" IF BASE AND
T-CONNECTOR ARE CUT OFF. DO NOT CUT BASE
AND T-CONNECTOR TO LESS THAN 6" EACH.

WARNING!!

The Link Lite Black Max must be installed so that the distance between its sensing field and the nearest point of operation hazard is greater than or equal to the minimum safety distance which must be calculated by a formula specified by OSHA and ANSI. See latest editions OSHA 1910.217, ANSI B11.1 and B11.9.



LINK SYSTEMS

LINK ELECTRIC & SAFETY CONTROL CO.
444 McNally Dr. • Nashville, TN. 37211

LINK LITE BLACK MAX MOUNTING
BRACKET ASSEMBLY, STRAIGHT
DRAWING P/N: 106616

NO	DESCRIPTION	DATE	BY
REVISIONS			
<small>This drawing and/or technical information is the property of LINK ELECTRIC & SAFETY CONTROL CO. This is submitted in confidence and is not to be reproduced for others without LINK's prior written consent.</small>			

SCALE 1=3	DATE 5-7-96	CODE IDENT NO 305
DWN BY JCN	CHK BY	DRAWING NUMBER C-305-1125

45° ADAPTER BRACKET

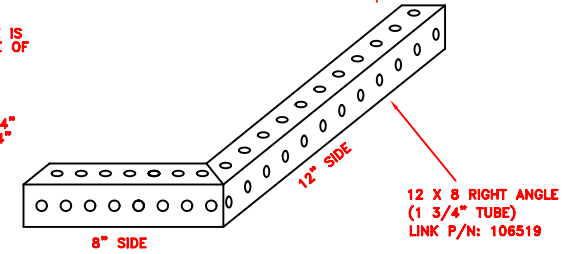
3/8 BOLTS, WASHERS, NUTS (4 PLS)

1/4 BOLTS, WASHERS, NUTS (4 PLS)

ADJUSTMENT WHEN BASE IS CONNECTED TO 12" SIDE OF 12X8 RIGHT ANGLE:

MAX. 'E' DIST. = 18"
MIN. 'E' DIST = 12"

MAX. 'F' DIST. = 13 3/4"
MIN. 'F' DIST. = 11 3/4"



ADJUSTMENT WHEN BASE IS CONNECTED TO 8" SIDE OF 12X8 RIGHT ANGLE:

MAX. 'E' DIST. = 14"
MIN. 'E' DIST. = 10"

MAX. 'F' DIST. = 17 3/4"
MIN. 'F' DIST. = 11 3/4"

'E' DIST.

'F' DIST.

3/8 DIA. HOLES FOR MOUNTING TO PRESS

10" BASE (2" TUBE)
LINK P/N: 106534

12 X 8 RIGHT ANGLE (1 3/4" TUBE)
LINK P/N: 106519

10" T-CONNECTOR (2" TUBE)
LINK P/N: 106520

VERT. SUPPORT (1 3/4" TUBE)

VERT. LENGTH	LINK P/N
48"	106247
60"	106248
72"	106545

ANY EXCESS LENGTH MAY BE CUT OFF

1 ASSEMBLY (5 PCS) FOR EACH MIRROR

ASSEMBLY P/N	MIRROR LENGTH	BLACK MAX UNIT	VERT. SUPPORT
900391	28"	18" OR 24"	48"
900392	40"	30" OR 36"	60"
900393	52"	42" OR 48"	72"

FINISH: CARBIDE BLACK

WARNING!!

The Link Lite Black Max must be installed so that the distance between its sensing field and the nearest point of operation hazard is greater than or equal to the minimum safety distance which must be calculated by a formula specified by OSHA and ANSI. See latest editions OSHA 1910.217, ANSI B11.1 and B11.9.

ALL NUTS, BOLTS, WASHERS, IN HARDWARE KIT
LINK P/N: 106550 (86 PCS)

DESCRIPTION	QTY	LINK P/N:
BOLTS (HEX 3/8-16 X 2 1/2)	16	106135
WASHERS (3/8 FLAT)	32	103311
NUTS (NYLOCK 3/8-16)	16	102249
MIRROR 45° ADAPT. BRACKET	2	106546
BOLTS (SOCKET 1/4-20 X 7/8)	4	102850
WASHERS (1/4 FLAT)	8	101620
NUTS (1/4-20)	4	103185
LOCK WASHER (1/4 SPLIT)	4	102320



LINK SYSTEMS

LINK ELECTRIC & SAFETY CONTROL CO.
444 McNally Dr. • Nashville, TN. 37211

LINK LITE BLACK MAX MOUNTING
BRACKET ASSEMBLY, MIRROR
DRAWING P/N: 106617

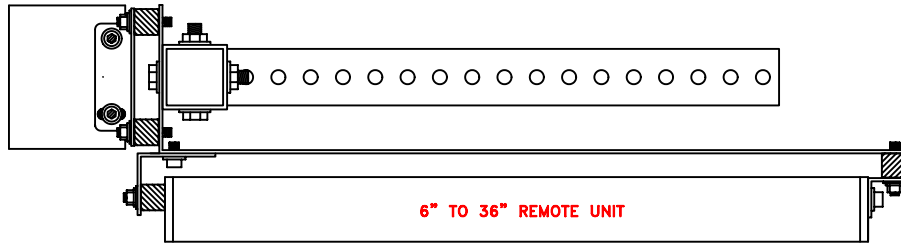
NO	DESCRIPTION	DATE	BY
REVISIONS			

This drawing and/or technical information is the property of LINK ELECTRIC & SAFETY CONTROL CO. This is submitted in confidence and is not to be reproduced for others without LINK's prior written consent.

SCALE	DATE	CODE IDENT NO
1=4	5-7-96	305
DWN BY JCN	CHK BY	DRAWING NUMBER C-305-1127

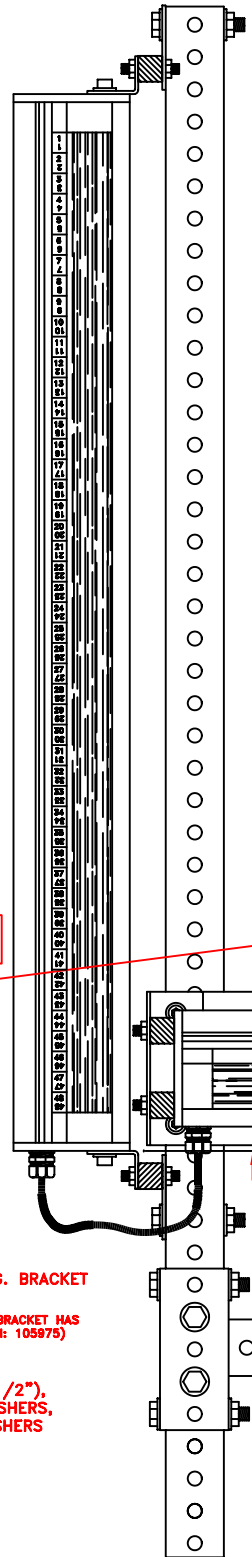
1 ASSEMBLY (5 PCS) FOR EACH TRANSMITTER/RECEIVER SET

ASSEMBLY P/N	REMOTE UNIT
900398	6"
900399	9"
900400	12"
900401	15"
900402	18"
900403	21"
900404	24"
900438	27"
900439	30"
900440	33"
900441	36"



TOP VIEW

6" TO 36" REMOTE UNIT



ALL NUTS, BOLTS, WASHERS, IN HARDWARE KIT
LINK P/N: 106637 (28 PCS *)

DESCRIPTION	QTY	LINK P/N:
BOLTS (HEX 3/8-16 X 3)	4	106227
WASHERS (3/8 FLAT)	8	103311
NUTS (NYLOCK 3/8-16)	4	102249
SCREW (BH 1/4-20 X 1/2)	4	101944
WASHER LOCK INT 1/4	4	10121
WASHERS (1/4 FLAT)	4	101620
* PLUS PARTS FROM STANDARD REMOTE KIT.		

REMOTE MTG. BRACKET LENGTH	LINK P/N
6"	106624
9"	106625
12"	106626
15"	106627
18"	106628
21"	106629
24"	105974
27"	107327
30"	107328
33"	107329
36"	107330

WARNING!!

The Link Lite Black Max must be installed so that the distance between its sensing field and the nearest point of operation hazard is greater than or equal to the minimum safety distance which must be calculated by a formula specified by OSHA and ANSI. See latest editions OSHA 1910.217, ANSI B11.1 and B11.9.

3/8 BOLTS X 3",
3/8 FLAT WASHERS,
3/8 NYLOCK NUTS

OPERATOR SIDE VIEW OF
REMOTE UNIT

USE THE MTG BRACKET ('A' OR 'B')
THAT WILL MATCH THE SLOT ON
THE FRONT MTG BRACKET
'A' P/N: 105797 (SHOWN)
'B' P/N: 105798
THESE SLOTS SHOULD MATCH

PRESS SIDE VIEW OF
REMOTE UNIT

LEFT SIDE MTG. BRACKET
P/N: 105977

(RIGHT SIDE MTG. BRACKET HAS
REVERSE BEND P/N: 105975)

SCREWS (BH 1/2"),
1/4 LOCK WASHERS,
1/4 FLAT WASHERS

DO NOT MOUNT REMOTE EXTENSION
BELOW THIS POINT



LINK SYSTEMS

LINK ELECTRIC & SAFETY CONTROL CO.
444 McNally Dr. • Nashville, TN. 37211

NO	DESCRIPTION	DATE	BY
1	ADDED 27,30,33,36" LENGTHS	1-15-98	JCN

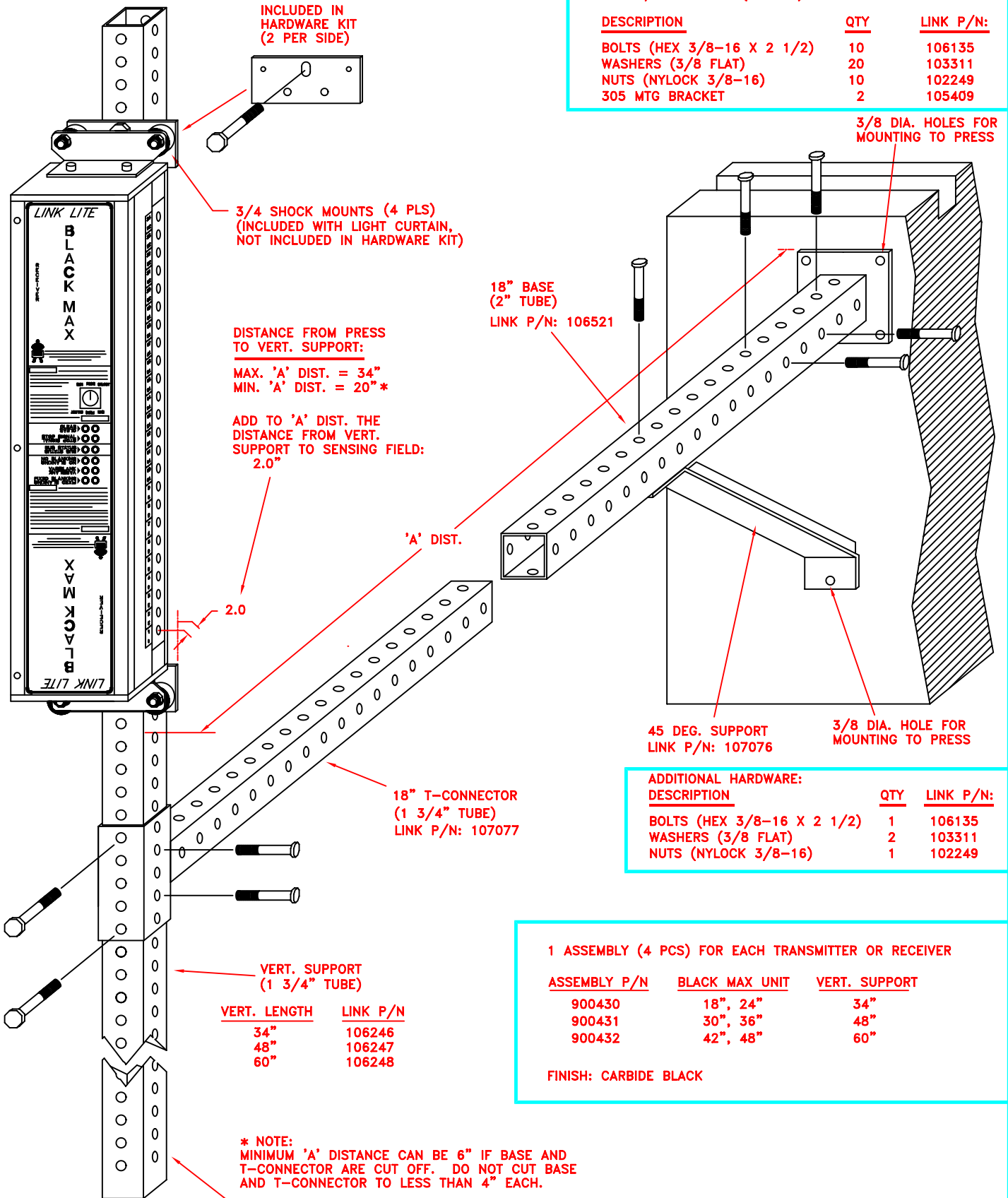
REVISIONS

This drawing and/or technical information is the property of LINK ELECTRIC & SAFETY CONTROL CO. This is submitted in confidence and is not to be reproduced for others without LINK's prior written consent.

LINK LITE BLACK MAX MTG BRACKET ASSEMBLY FOR 6" - 36" REMOTE UNIT DRAWING P/N: 106636		SCALE DWG PRINT 1=1 1=3	DATE 6-17-96	CODE IDENT NO 305
DWN BY JCN	CHK BY	DRAWING NUMBER C-305-1132		

ALL NUTS, BOLTS, WASHERS, IN HARDWARE KIT
LINK P/N: 106535 (42 PCS)

DESCRIPTION	QTY	LINK P/N:
BOLTS (HEX 3/8-16 X 2 1/2)	10	106135
WASHERS (3/8 FLAT)	20	103311
NUTS (NYLOCK 3/8-16)	10	102249
305 MTG BRACKET	2	105409



ADDITIONAL HARDWARE:

DESCRIPTION	QTY	LINK P/N:
BOLTS (HEX 3/8-16 X 2 1/2)	1	106135
WASHERS (3/8 FLAT)	2	103311
NUTS (NYLOCK 3/8-16)	1	102249

1 ASSEMBLY (4 PCS) FOR EACH TRANSMITTER OR RECEIVER

ASSEMBLY P/N	BLACK MAX UNIT	VERT. SUPPORT
900430	18", 24"	34"
900431	30", 36"	48"
900432	42", 48"	60"

FINISH: CARBIDE BLACK

WARNING!!

The Link Lite Black Max must be installed so that the distance between its sensing field and the nearest point of operation hazard is greater than or equal to the minimum safety distance which must be calculated by a formula specified by OSHA and ANSI. See latest editions OSHA 1910.217, ANSI B11.1 and B11.9.



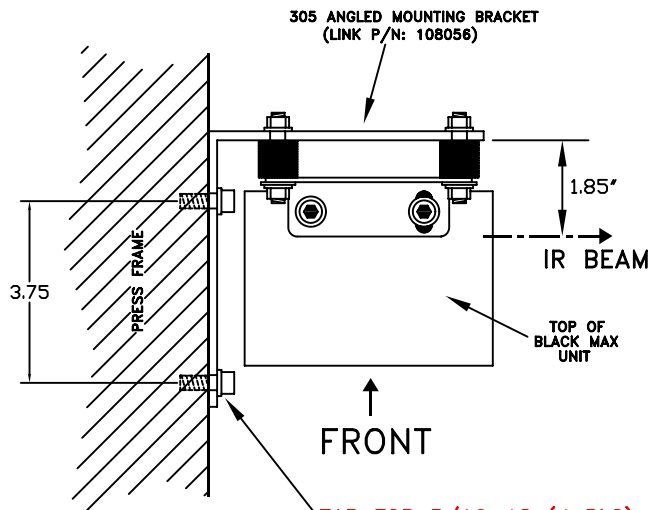
LINK SYSTEMS

LINK ELECTRIC & SAFETY CONTROL CO.
444 McNally Dr. • Nashville, TN. 37211

LINK LITE BLACK MAX MOUNTING BRACKET ASSEMBLY, STRAIGHT EXTENDED
DRAWING P/N: 102366

NO	DESCRIPTION	DATE	BY
REVISIONS			
This drawing and/or technical information is the property of LINK ELECTRIC & SAFETY CONTROL CO. This is submitted in confidence and is not to be reproduced for others without LINK's prior written consent.			

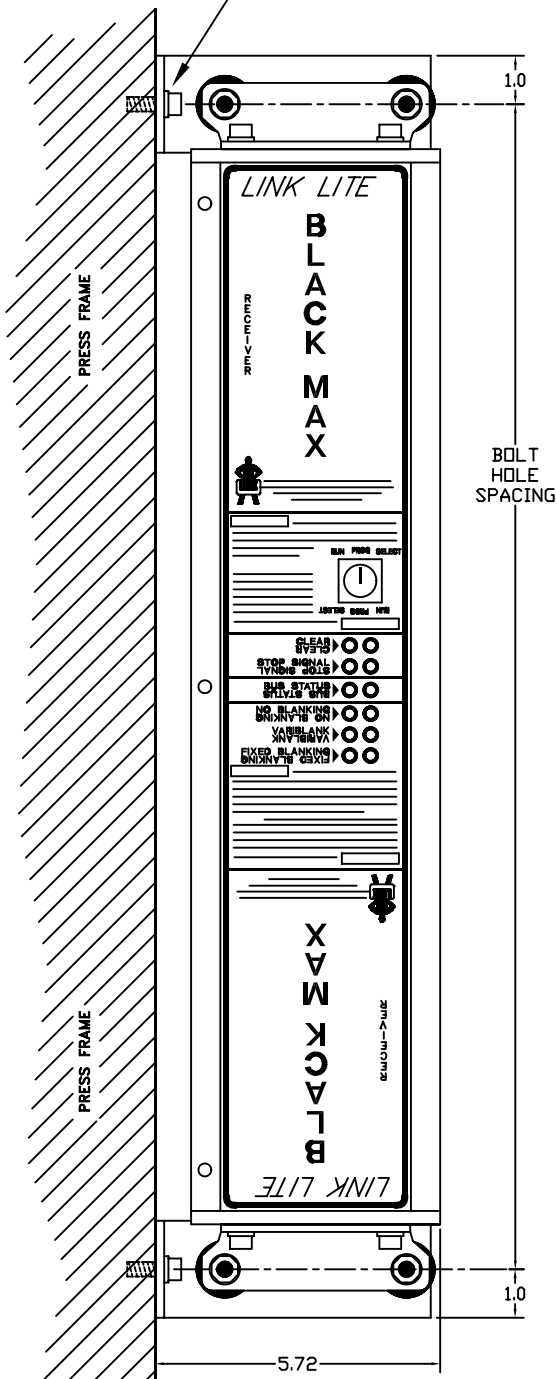
SCALE	DATE	CODE IDENT NO
1=3	6-30-97	305
DWN BY	CHK BY	DRAWING NUMBER
JCN		C-305-1146



TAP FOR 5/16-18 (4 PLS)

ALL NUTS, BOLTS, WASHERS, IN HARDWARE KIT
LINK P/N: 108057 (15 PCS)

DESCRIPTION	QTY	LINK P/N:
BRACKET MTG 305 90 DEG	2	108056
SCREW S H 5/16-18 X 3/4	4	103418
WASHER LOCK SPLIT 5/16	4	102321
WASHER FLAT 5/16 USS 3/8 ID-7/8 OD	4	103311
DRAWING C-305-1159	1	108058



UNIT	BOLT HOLE INCH	SPACING mm
18	22.2	564
24	28.2	716
30	34.2	869
36	40.2	1,021
42	46.2	1,174
48	52.2	1,326

WARNING!!

The Link Lite Black Max must be installed so that the distance between its sensing field and the nearest point of operation hazard is greater than or equal to the minimum safety distance which must be calculated by a formula specified by OSHA and ANSI. See latest editions OSHA 1910.217, ANSI B11.1 and B11.9.



BLACK MAX 90 DEG SURFACE MOUNT BRACKET ASSEMBLY KIT
DRAWING P/N: 108058

NO	DESCRIPTION	DATE	BY
REVISIONS			
SCALE DWG PRINT 1=1 1=2		DATE 12-9-99	CODE IDENT NO 305
DWN BY JCN		CHK BY	DRAWING NUMBER C-305-1159

This drawing and/or technical information is the property of LINK ELECTRIC & SAFETY CONTROL CO. This is submitted in confidence and is not to be reproduced for others without LINK's prior written consent.